






42 Fitzalan Circuit Arundel QLD

5  3  3 

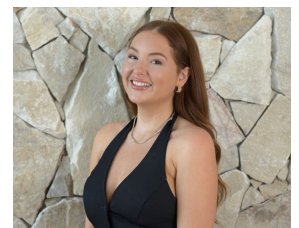
FEATURES YOU'LL LOVE;

- * Stunning entrance with double front doors and high ceilings.
- * Expansive open-plan living and dining areas flow seamlessly to the fantastic wrap around verandah.
- * A grand raised dining area with beautiful polished timber floors.
- * The tranquil outdoor covered patio with skylights offer a magical setting for alfresco dining.
- * Stylishly designed, light filled dining and family rooms with plantation shutters & electric blinds throughout.
- * The lounge features striking raked ceilings, a wet bar, wine cellar and a fireplace.
- * The chef's kitchen includes a herb atrium window, granite sink and countertops and high-quality NEFF oven, cooktop,

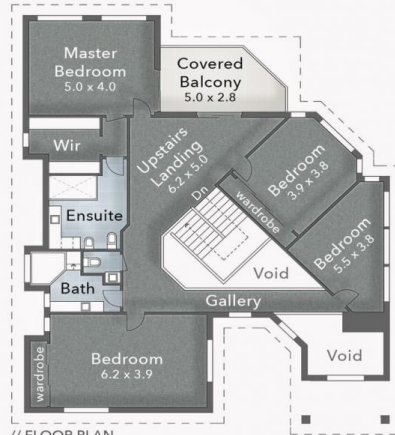
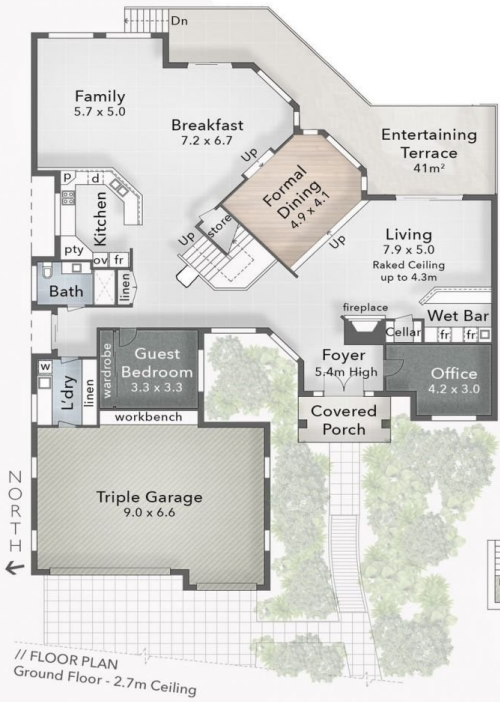
Building Size : 648 sqm
Land Size : 863 sqm
View : <https://www.hinterlandrealty.com/8156757>



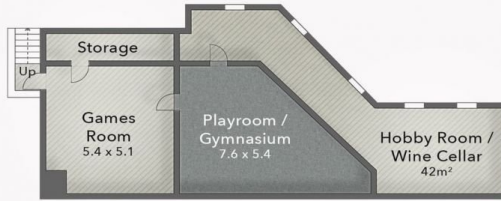
Lauren Johnson
07 5578 2311



Chloe Flack
07 5578 2311



// FLOOR PLAN
First Floor



// FLOOR PLAN
Basement - 2.1m Ceiling



// SITE PLAN

FITZALAN CIRCUIT